



DERUTU

MORE INTELLIGENT
WORLD FOR CONSTRUCTION

PC18

Plaster plastering machine

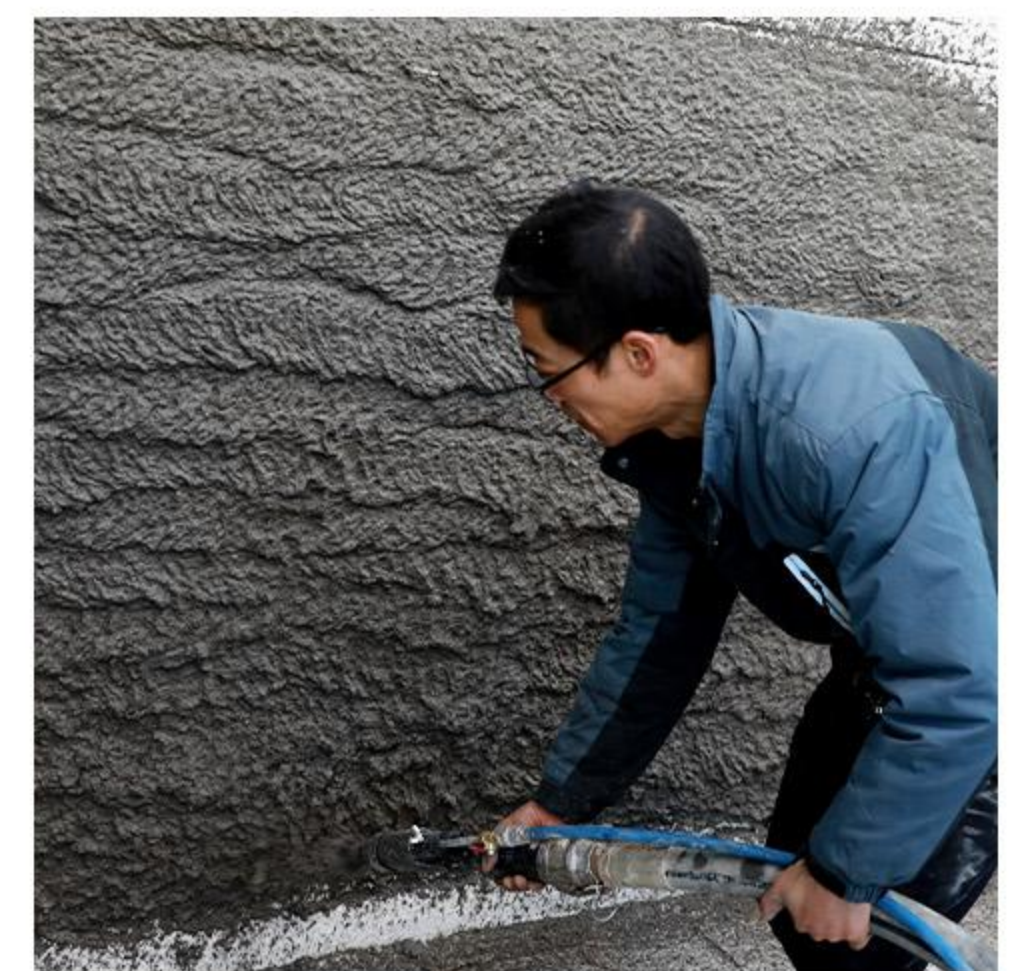


*PC18: worm pump, mortar sprayer
DERUTU.COM



Technical Specifications

	PC18
Electric motor	7.5 kw / 380V
Worm pump	Specially made
Max. aggregate size	< 6 mm
Theoretical output	42L/min
Max. working pressure	70 bar
Compressor	3.5 kw (KOELLMANN)
Hopper capacity	128 L
Delivery distance	40 m
Delivery height	20 m
Size	200*80*90 cm
Weight	210 kg



Introduction

DERUTU PC18 uses mature worm pump technology to support the spraying of cement mortar, gypsum, concrete, and other materials, greatly simplifying the construction process and improving work efficiency.

Applicable Project

- repair and renovation works
- Pumping self-levelling floor screeds
- Spraying of thick coat ready-mixed plaster
- Applying lightweight insulating materials
- Filling and pressure pointing of open brickwork
- Pressure pointing on prefabricated structures
- Application of thin layer finishing plaster
- Controlled pressure injection of cementitious slurries

Features

- ① **Worm pump**, larger screw pitch design, supports the passage of large particles of aggregate.
- ② **Pure copper** motor provides stable power, and the service life is extended by more than 30%.
- ③ **Air compressor**, feed, and air at the same time, air switch spraying is convenient and fast, work is more convenient.
- ④ **DERUTU Special** high-pressure nozzles and spray guns are wear-resistant and durable, with a 37% longer lifespan.
- ⑤ The vibrating screen can filter large particles, wear-resistant casters adapt to the construction site, and come with **aviation connector**.

Compatible Material

- Spraying thick coat traditional mortar
- Pumping common and ready-mixed mortars
- Applying plaster and special mortar for concrete

Includes

- Worm pump host
- Sieve with 8 mm mesh
- Electric vibrator
- Hopper safety grill
- Built-in air compressor
- 10m mortar hose Ø 32 mm with cam-lock couplings
- 10 m air hose Ø 8 mm with quick couplings
- Manual grease pump
- Spray gun
- nozzles

