



400-8936-518



Number6 Liangxiang Economical Development Zone,Beijing



# D60 GYPSUM SPRAYER



## Product Description

D60 gypsum sprayer uses screw pump,automatic water,dry powder mixing technology , can automatically mix dry powder or architectural gypsum , greatly simplifies the work process , improves work efficiency , It is the best choice for all kinds of light or heavy gypsum plastering.



## High Yield

It can work continuously 15 hours, and automatically mix and stir dry powder or building gypsum to improve efficiency.



## High Quality

Worm pumping, high pressure, high density, simplifies work process, a spray thickness of 3cm



## High Efficiency

High speed spraying, easy to complete 10-20 tons of material a day, a day to complete more than 800 square meters of plaster



## Easy to Operate

One button start, automatic water, automatic mixing, no need a number of people, quickly applied



## Safety

Oil-free silent coman air compressor, convey material and air together, pneumatic switch is convenient and fast, Schneider electric protects the motor from damage, Honey Phil waterway system



## Environmental Protection

Durable and efficient dust proof, pure electric cleaning, avoid the construction site secondary pollution



Parameter Indicators

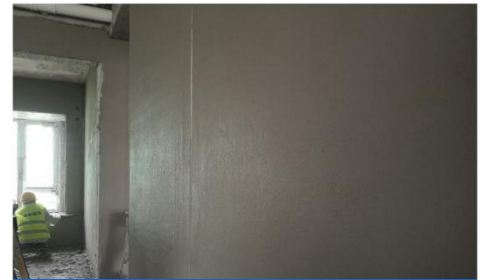
Mode	D60 -gypsum sprayer		
Power	380V/50HZ	WaterwaySystem	Honeyfield
ElectricControlBox	Schneider IntegratedControl	Horizontal TransportDistance	60M
Main MotorPower	Nord/5500W	Vertical TransportDistance	40M
AirCompressorPressure	Komen/50bar	Hopper Capacity	115L
Weight	220KG	Size ( Length,Width,Height )	1 6 0 * 6 5 * 8 6 C M
Maximun Particle Size	6MM	After-sales Service	Warranty 3 Year
Scope of Application	Light Gypsum , Heavy Gypsum,Finished Mortar 、 Self-leveling Mortar,Polymer Mortar,Plastering Mortar,Clay Mortar,Perfusion Mortar,Fireproof Mortar,Floor Mortar,Insulation Mortar,Putty,etc.		



Jiangbei in Chongqing construction site



Xian in Shanxi Construction site



Langfang in Hebei Construction site

D60 gypsum sprayer has been applied in many construction sites in Jiangbei, Xian, Langfang, Guan, Qingdao. When it finishes the project, the project team will invite Party A's representative, the general contractor and the supervisor to jointly check and accept the project at one time, reducing manpower. It greatly improves the work efficiency, quality and ensures the construction period.



400-8936-518



Number 6 Liangxiang Economical Development Zone in Beijing